

# Napa Quake

[Update August 26 12:30 pm. Berryessa News has produced a Youtube video using an aerial drone. The Trefethen winery is the subject. A historic winery building, vintage 1886, was badly damaged. Thanks to Youtube, you can see the video here. Trefethen is one of the hardest-hit. Buy a bottle of their wine!]

[Update August 25 11:30 am. **USA Today has a nice story** with additional details. **KPCC in Pasadena ran a 30 minute segment** that included Elizabeth Weise, the USA Today reporter for that story. **Wines and Vines has a story** with additional industry-specific details. Finally, **kudos to Siduri's Adam Lee (@SiduriWines)** for relentlessly promoting this: Help our Napa friends out. **#buyanapabottletonight** <http://t.co/sJvDXV9MCs>.]

[Update August 24 6:45 pm. **Forum for wineries needing assistance and those able to offer assistance.**]

[Update August 24 6:30 pm. **The Red Cross has opened a second shelter in Napa. Patch has the details.**]

[Update August 24 6:20 pm. **W. Blake Gray has an article on wine-searcher.com** that contains additional details.]

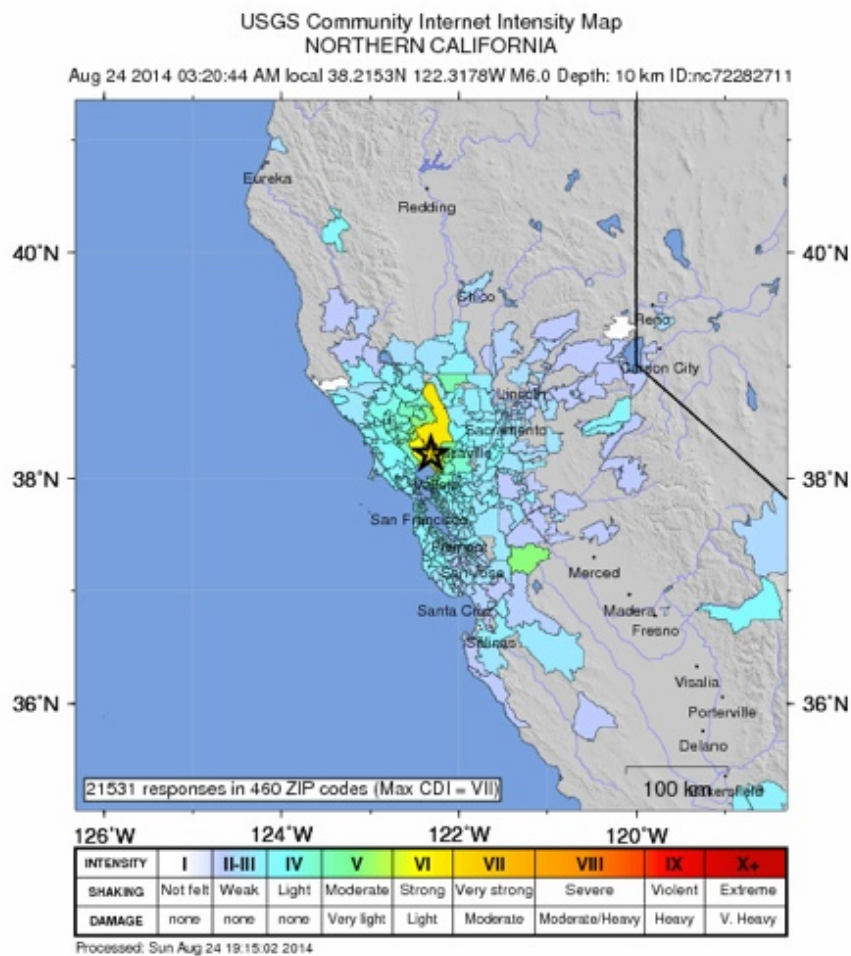
There was a **6.0 magnitude earthquake near Napa at 3:20 am Pacific Daylight Time on August 24**. This article is to provide **information about the Napa quake from local perspective**. Latest report at 2:30 pm says **120 people were injured, three seriously**.

## How You Can Help

I always recommend **donating to the local chapter of the American Red Cross**. In this case, it's the **Napa Valley Chapter**. Also, of course, buy some Napa wine.

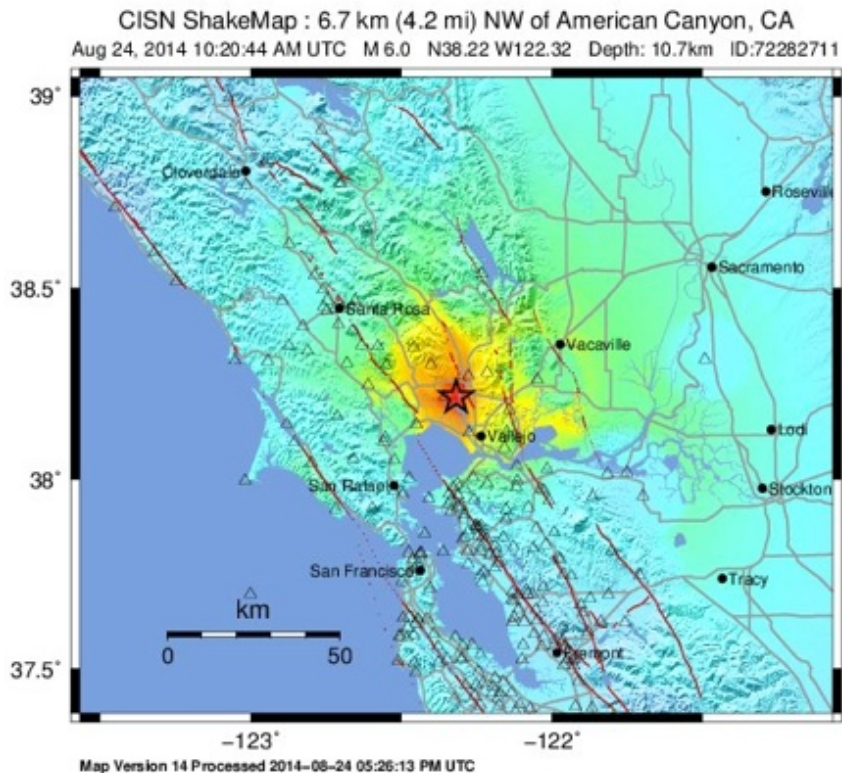
# The Official Word on the Napa Quake

First, damage seems to be limited to the southern Napa Valley southeast to Vallejo. The U.S. Geologic Survey maintains a crowdsourced “did you feel it?” map on their website. Here’s what it looked like around 10 am:



USGS Crowdsourced Map

USGS also has a **traditional seismic activity map**:



PERCEIVED SHAKING	Not felt	Weak	Light	Moderate	Strong	Very strong	Severe	Violent	Extreme
POTENTIAL DAMAGE	none	none	none	Very light	Light	Moderate	Mod/Heavy	Heavy	Very Heavy
PEAK ACC.(%g)	<0.1	0.5	2.4	6.7	13	24	44	83	>156
PEAK VEL.(cm/s)	<0.07	0.4	1.9	5.8	11	22	43	83	>160
INSTRUMENTAL INTENSITY	I	II-III	IV	V	VI	VII	VIII	IX	X+

Scale based upon Wald, et al.; 1999

USGS Shake Map

## Damage to Wineries and Wine-Related Businesses

To add insult to injury, a statue of Bacchus toppled at Ceja Vineyards:



Ceja Vineyards Bacchus  
Toppled

The wine library at Scholium took a hit:



Scholium Library

Barrels as pick-up-sticks at Matthiasson:



Matthiasson Barrel Jumble

Most wineries that reported collapsed barrel racks also noted that **the barrels were pretty much intact. In a few cases, bungs popped out so there was some loss.**

This photo from the Silver Oak Winery has gone viral.

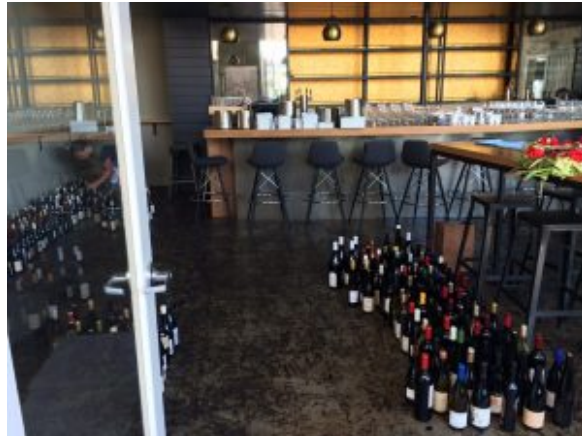


Silver Oak

**Retailers were hit hard:**

[portfolio\_slideshow include="3718,3717,3708"]

**Napa's "newest wine bar, Cadet" estimates losses between \$15,000 and \$20,000 from wine inventory.**



Cadet Wine Bar

## **Damage to Houses and Office Buildings**

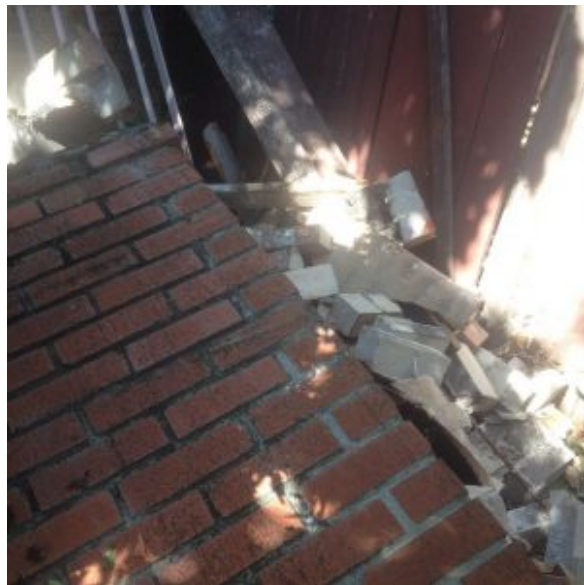
**Damage to houses and office buildings was extensive, especially in downtown Napa.** (If you're not familiar with the area, the city of Napa is actually not the center of wine activity in the Napa Valley. That honor goes to the nearby city of St. Helena.)



Kitchen Wreck



Chimney Wreck



Chimney and Fence Wreck



Crack Reported Ten  
Feet Deep

# But Some People Found a Silver Lining

At least one skateboarder found a use for a buckled street:



Skateboarder